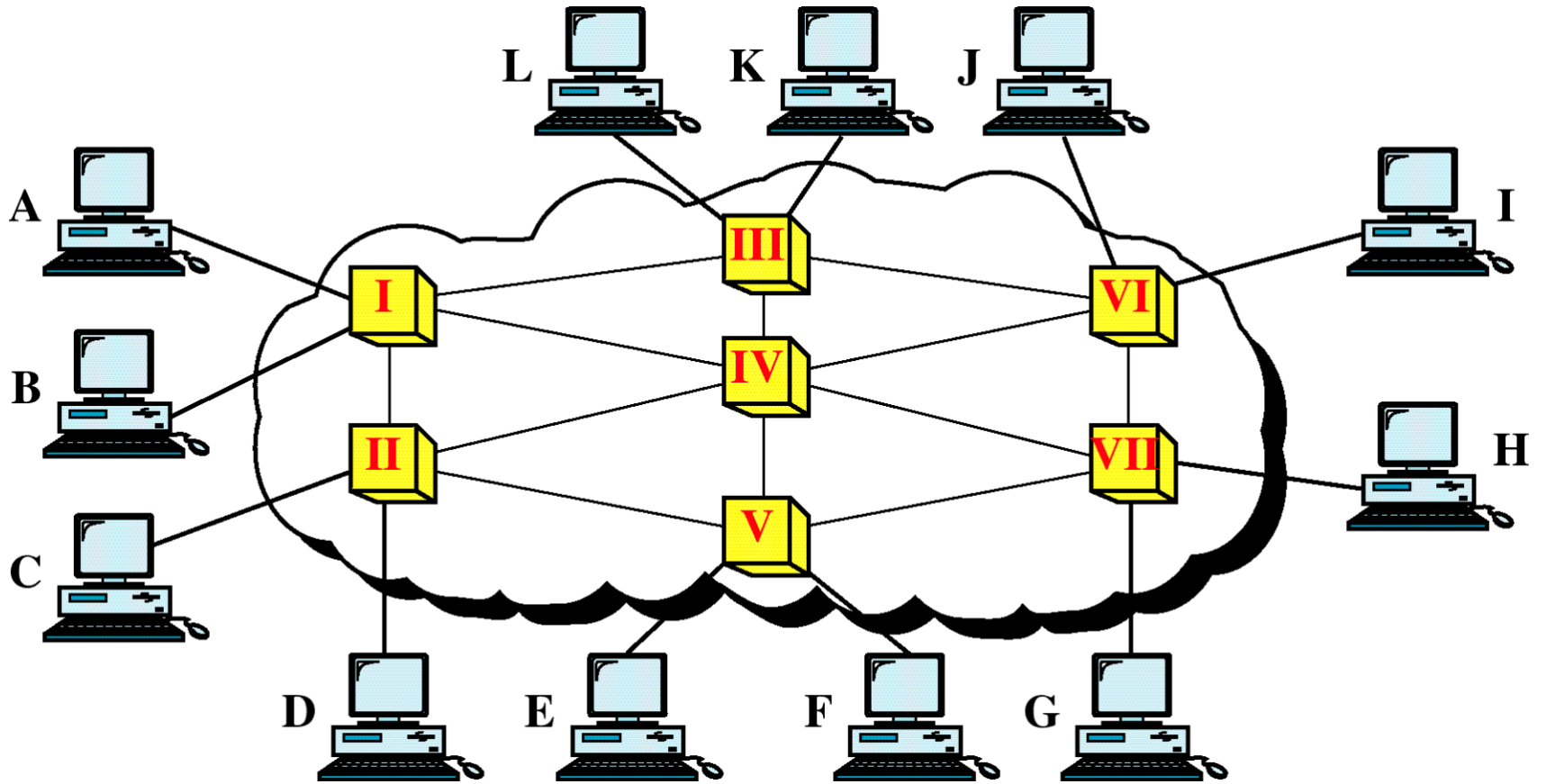


Switching

- ▶ **Circuit Switching**
 - ▶ **Packet Switching**
 - ▶ **Message Switching**
- 

Switched Network



Switching methods

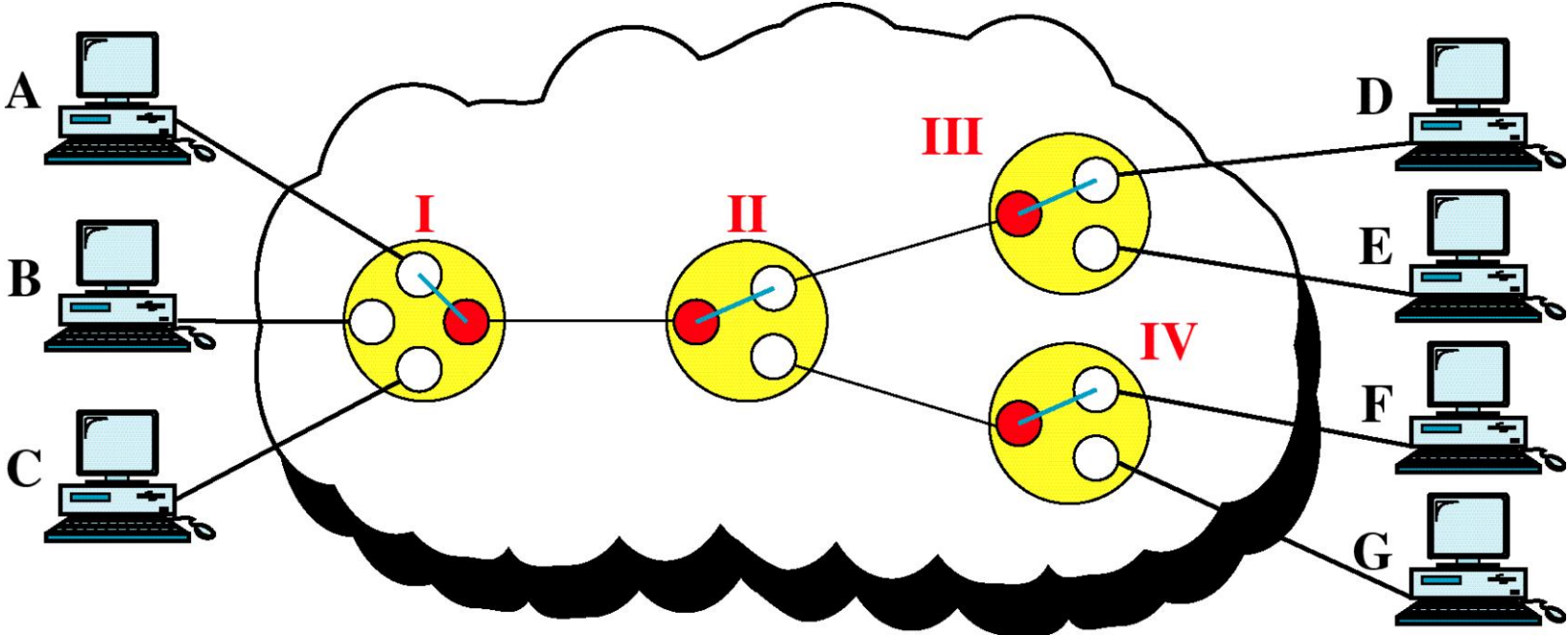
```
graph TD; A[Switching methods] --> B[Circuit switching]; A --> C[Packet switching]; A --> D[Message switching];
```

Circuit switching

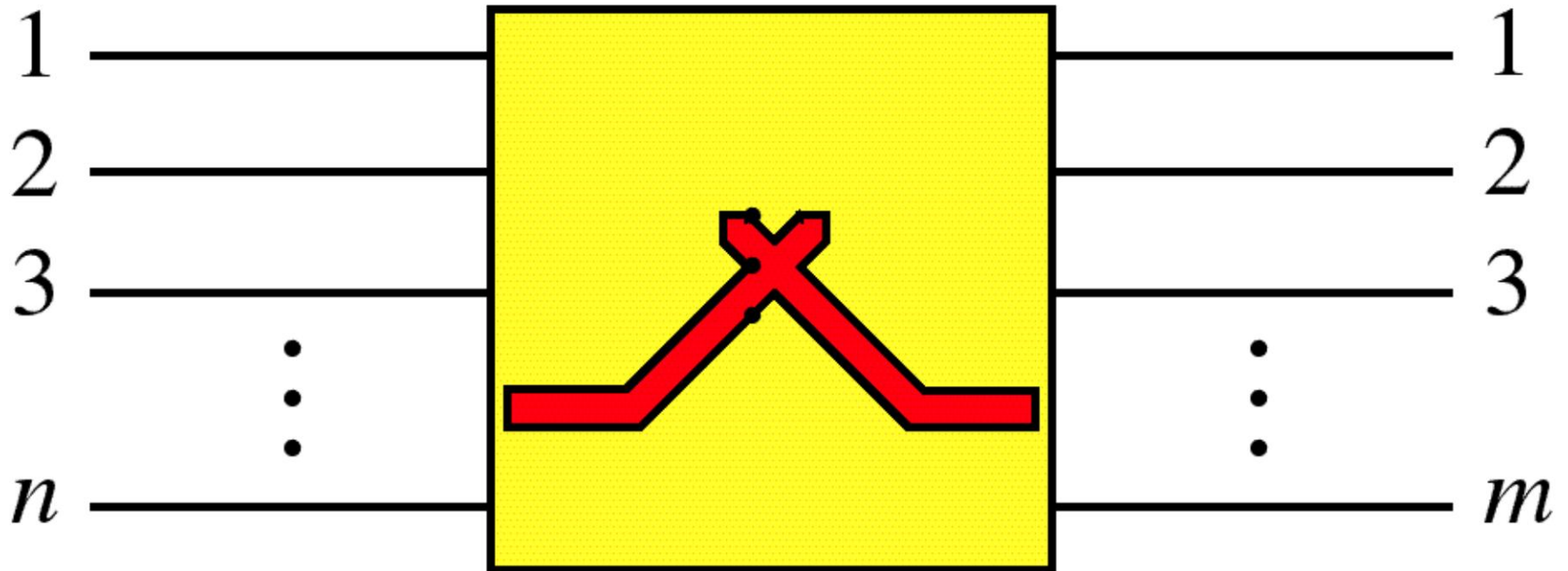
Packet switching

Message switching

Circuit-Switched Network

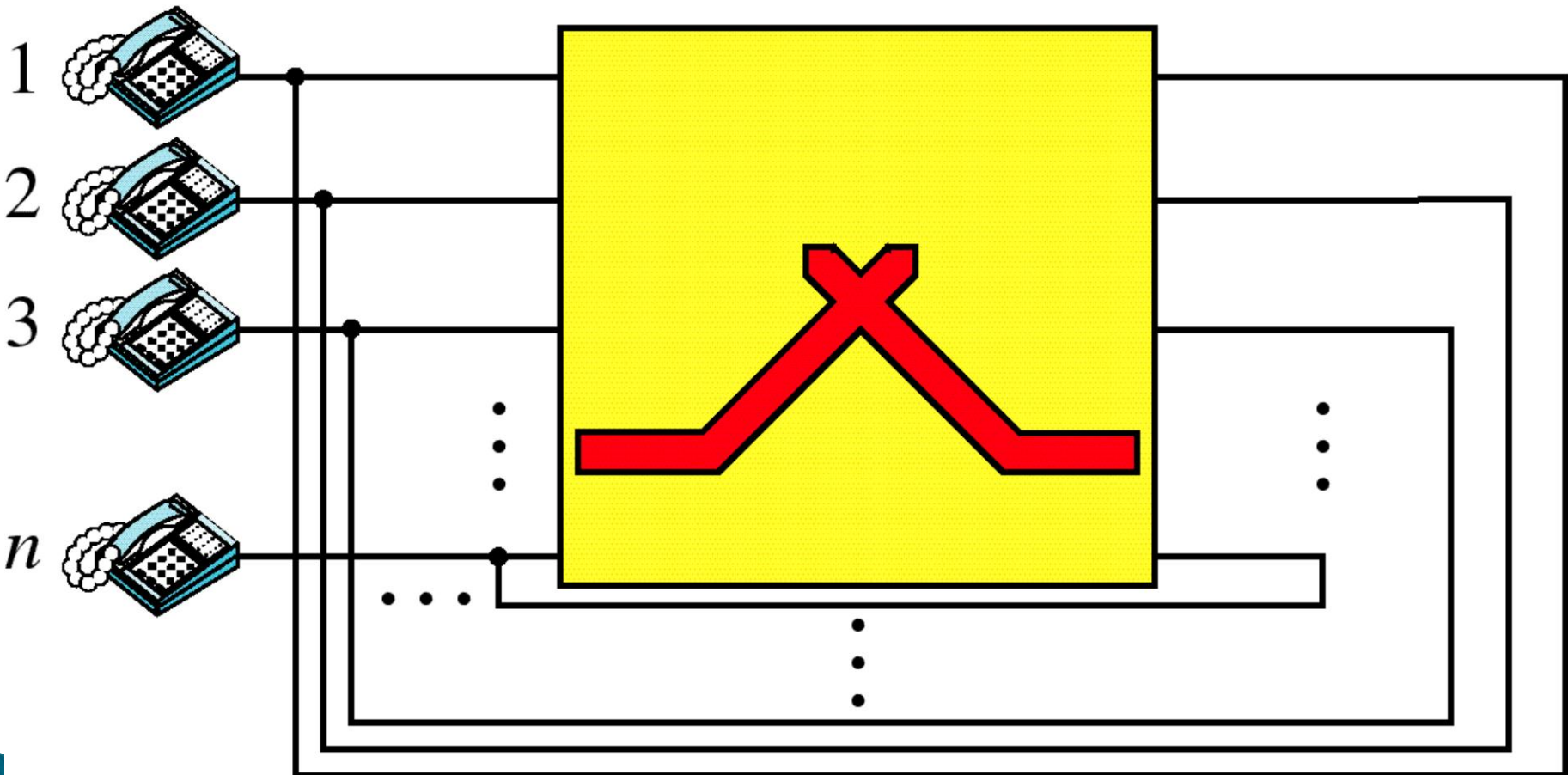


Switch



Folded Switch

Switch



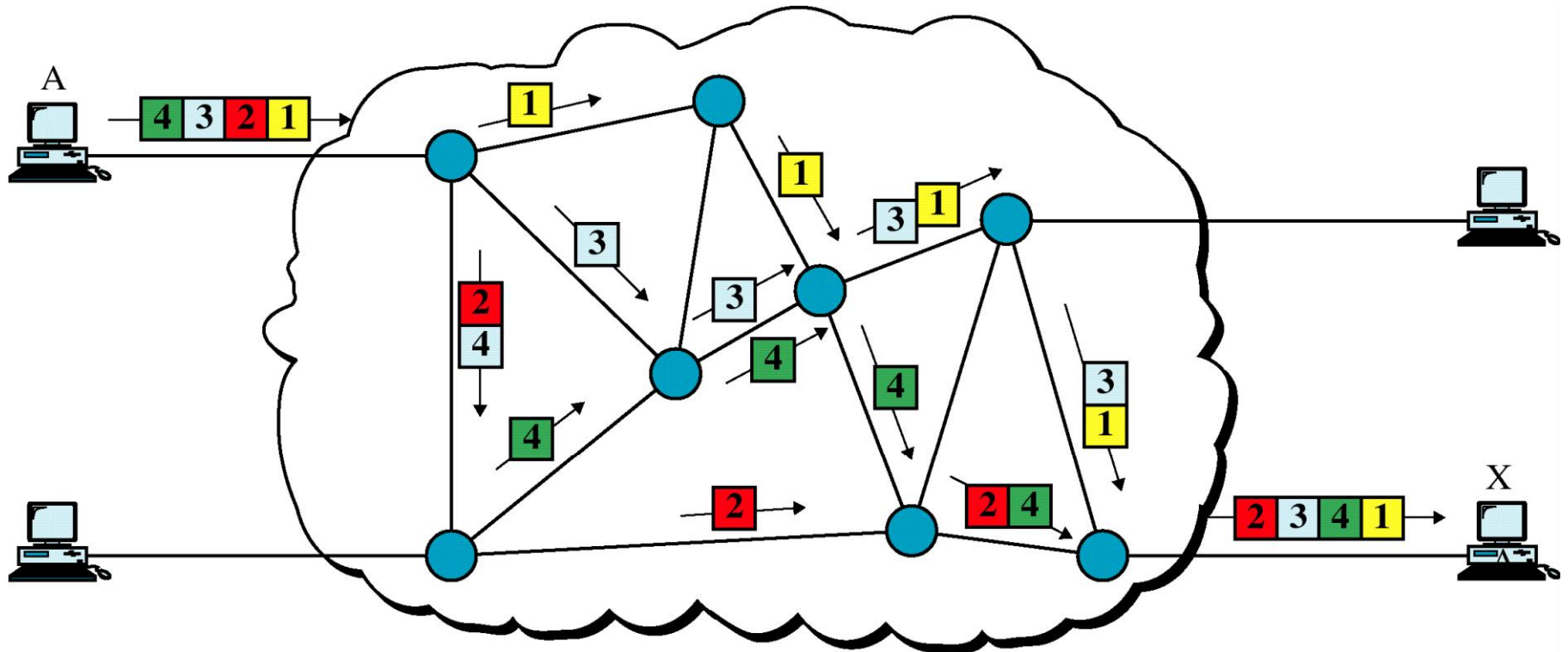
Packet switching

```
graph TD; A[Packet switching] --> B[Datagram approach]; A --> C[Virtual circuit approach];
```

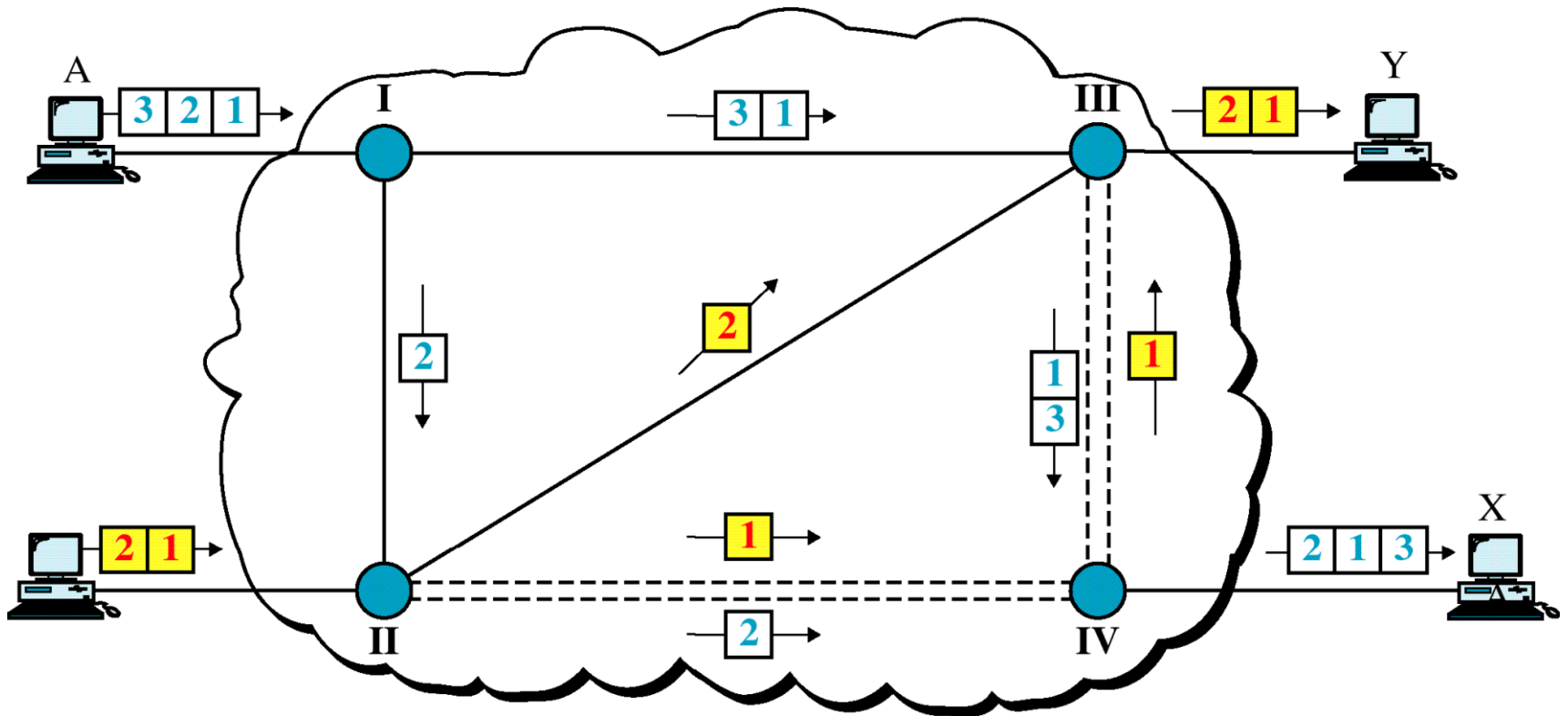
Datagram approach

Virtual circuit approach

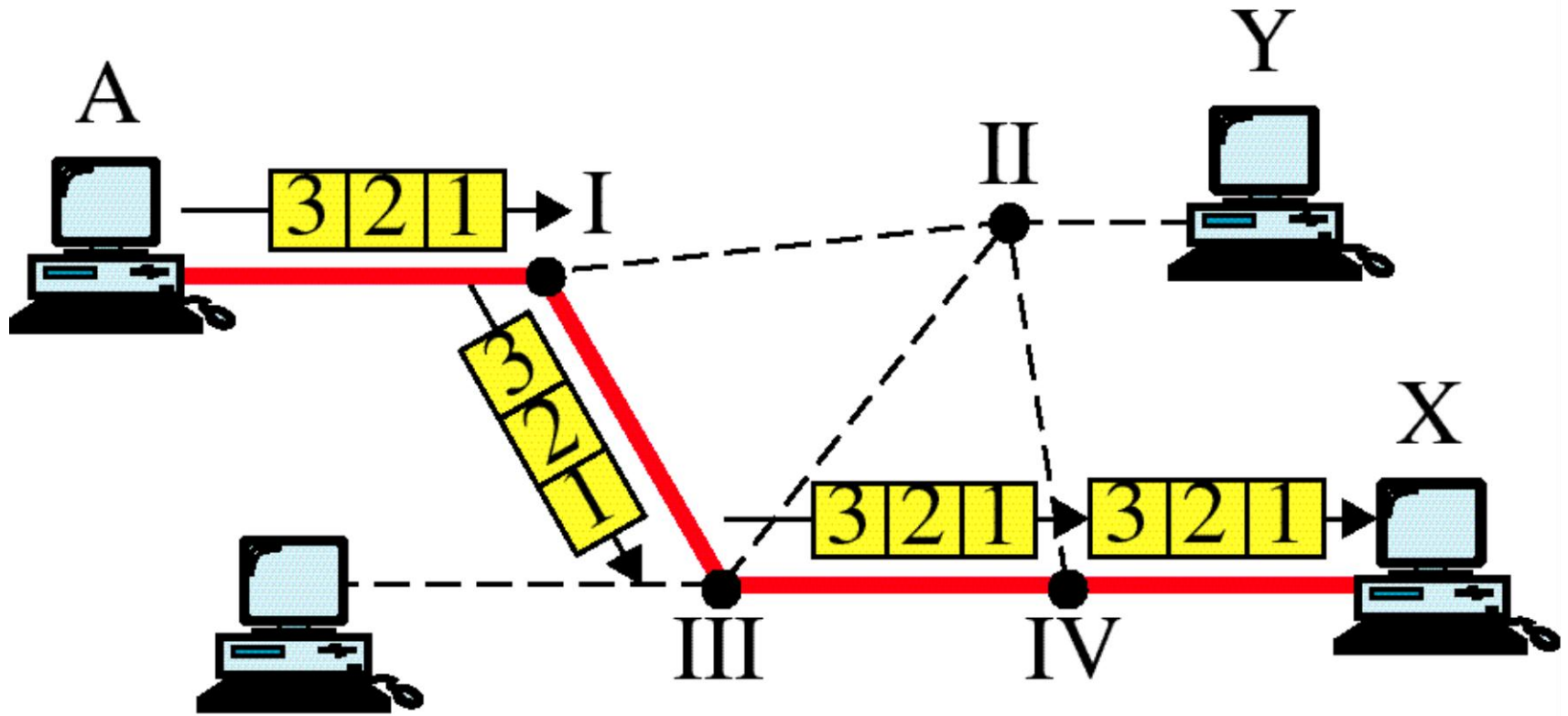
Datagram Approach



Datagram Approach, Multiple Channels



Switched Virtual Circuit



Data transfer

Message Switching

